

Laurelton Hall

Louis Comfort Tiffany's Reception Hall



The approximately 1,500-square-foot reception hall at Laurelton Hall was more than an entry. It was the central organizing element of the house and the heart of an intricate waterway that ran throughout the grounds in a symbolic expression of life and nourishment. Paired columns formed an octagonal inner space with an octagonal pool and tall glass vase at its center. Rising three stories in successive stages, each balcony gallery showcased art and objects, and a leaded-glass skylight filtered a soft amethyst-colored light into the room.



Above: Lower level of the reception hall showing the rill that led water from the central interior pool to the entire estate's complex water system. Second-floor balcony of the reception hall featuring displays of art including works by Tiffany known as the "artist's collection." Visit the Other Rooms gallery to view some of these pieces. Photograph by David Aronow, c. 1925.

Right: Water flowed through this fountain vase (56-046) in the reception hall's octagonal pool. Concealed at the vase's base were interlocking color wheels which bathed the fountain in ever-changing colored light.



On front: Reception hall, Laurelton Hall, c. 1925.
Photograph by David Aronow.

Objects in this gallery are from or related to the reception hall at Laurelton Hall. Objects from the reception hall are specifically marked and were designed by Louis Comfort Tiffany (1848–1933) or one of his artists and made under the name of one of his companies, unless otherwise noted.

1. Hanging globe,
c. 1905

Reception hall,
Laurelton Hall
Blown glass,
gilt bronze

Marks on shade: *L.C.T.*
(2003-021)



2. *Tiffany Pool L. I.* [Long
Island], c. 1914

Gouache on paper
Francis Luis Mora,
Uruguayan-American,
1874–1940

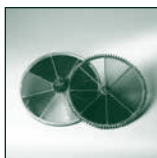
Signed, lower left:

F. Luis Mora.

Inscribed: *Tiffany Pool L. I.*
(2007-016)

3. Pair of color
wheels,
c. 1904–10

Fountain,
reception hall,
Laurelton Hall
Lead, brass, glass
(U-102:1, 2)



4. Four scrolled panels from
The Four Seasons window,
c. 1899–1900

Garden entrance,
reception hall,
Laurelton Hall
Exhibited: Exposition
Universelle, Paris, 1900, and
Prima Esposizione
Internazionale d'Arte
Decorativa Moderna,
Turin, Italy, 1902
Leaded glass
(64-036:A–D)

5. *Top shelf, left to right:*

Vase, c. 1914

Blown glass
Marks: 2191 J
L.C. Tiffany –

Favrile

Paper label: [conjoined *LCT*] /
TIFFANY FAVRILE GLASS
REGISTERED TRADE MARK
(56-021)



Vase, c. 1914

Blown glass,
metal

Marks: 3084 J /
L.C. Tiffany – Favrile
(69-019)



**Champagne glass,
after 1913**

Blown glass

Marks: θ 1276 / *L.C.T.*
(66-037)

Middle shelf, left to right:

Vase, c. 1903

Blown glass

Marks: *L.C.T.* /
Y6416



Paper label:

[partial paper label]

Gift of Howard J. Lockwood
(2022-011:15)

Vase, c. 1912

Aquamarine

Blown glass

Marks: 5254 G / *L.C.*
Tiffany – Favrile
(54-064)

Vase, c. 1894–95

Blown glass

Paper label: [conjoined
LCT] / [TIFFANY FAVRILE
GLASS] *REGISTERED*
TRADE MARK

Given in honor of
Mrs. Krystina DrieHaus
(95-010)

Bottom shelf, left to right:

Vase, c. 1915

Narcissus

Blown glass

Marks: 2728 L /
L.C. Tiffany – Favrile
(55-004)



Vase, c. 1910

Glazed white clay

Marks: [conjoined *LCT*] / 7
(74-029)

Vase, c. 1909

Blown glass

Marks: 6974 H / *L.C.*
Tiffany – Favrile

Gift of Howard J. Lockwood
(2022-011:6)

6. *Top shelf, left to right:*

Vase, c. 1907

Paperweight

Blown glass

Marks: 5647C

Gift of Howard J.

Lockwood

(2022-011:10)



Vase, c. 1896

Blown glass

Marks: X1227

(69-021)



Vase, c. 1915

Paperweight

Blown glass

Marks: 7525 K /

L.C. Tiffany – Favrite

Paper label: [conjoined *LCT*] /

[*TIFFANY FAVRI*]*LE GLASS*

[*REGISTERED TRADE*]

MARK

Gift of Howard J. Lockwood

(2022-011:12)

Middle shelf, left to right:

Vase, c. 1913

Byzantine

Blown glass

Marks: 2301 H /

L.C. Tiffany – Favrite

(56-040)



Vase, c. 1898

Blown glass

Marks: *L.C.T.* / o8466

Paper label: [conjoined

TGDco] / *TIFFANY FAVRILE*

GLASS / REGISTERED

TRADEMARK

(56-026)

Vase, c. 1909

Byzantine

Blown glass

Marks: 6743E /

L.C. Tiffany – Favrite

Gift of Howard J. Lockwood

(2022-011:2)

Bottom shelf, left to right:

Vase, c. 1902

Blown glass

Gift of Howard J.

Lockwood

(2022-011:14)



Vase, c. 1897

Blown glass

Marks: *L.C.T. / E150*

(55-010)

Vase, c. 1905

Blown glass

Marks: *L.C.T. / W 4275*

Gift of Howard J. Lockwood
(2022-011:8)

7. *Top shelf, left to right:*

Vase, c. 1916

Byzantine

Blown glass

Marks: *850L /*

L.C. Tiffany – Favrile

Gift of Howard J. Lockwood
(2022-011:3)



Vase, c. 1924

Byzantine

Blown glass

Marks: *L.C. Tiffany –*

Favrile / Inc. / 5167 N

Gift of Micki and Jay Doros
(2021-001:5)

Vase, c. 1899

Blown glass

Marks: *L.C.T. / H 1433*

(56-007)

Middle shelf, left to right:

Vase, c. 1916

Blown glass

Marks: *5064 K /*

L.C. Tiffany –

Favrile

(2003-022b)



Covered jar, c. 1905

Flowering branches

Glazed white clay

Marks: [conjoined *LCT*] / 7 /

P 711 L.C. Tiffany –

Favrile Pottery

(77-002:A&B)

Vase, c. 1905

Blown glass

Marks: *4479D /*

L.C. Tiffany – Favrile

Gift of Howard J. Lockwood
(2022-011:4)

Bottom shelf, left to right:

Vase, c. 1913

Aquamarine

Blown glass

Marks: *L.C.*

Tiffany – Favrile / 1988H

Paper label: *533*

(56-005)



Vase, c. 1910

Glazed white clay

Marks: [conjoined *LCT*] / 7
(67-015)

Vase, c. 1915

Aquamarine

Blown glass

Marks: 5399 M /

*L.C. Tiffany^{Inc} – Favrile /
Panama – Pacific Ex-*
(62-005)

**8. *In and around replicated
marble basin:***

Replica fountain vase

Blown glass

Steuben Glass, Corning,
New York, 1903–2011,
maker

*The original fountain vase
(56-046) located in the
Garden Passage appears
orange due to the mineral
deposits from the water that
flowed through and over it
at Laurelton Hall.*

Rock crystals

North terrace and
reception hall,

Laurelton Hall

Rose quartz
(2004-022)

9. Charger, c. 1910

Second-floor

balcony,

reception hall,

Laurelton Hall

Blown glass

Marks: 206 A-Coll.

L.C. Tiffany – Favrile
(82-001)



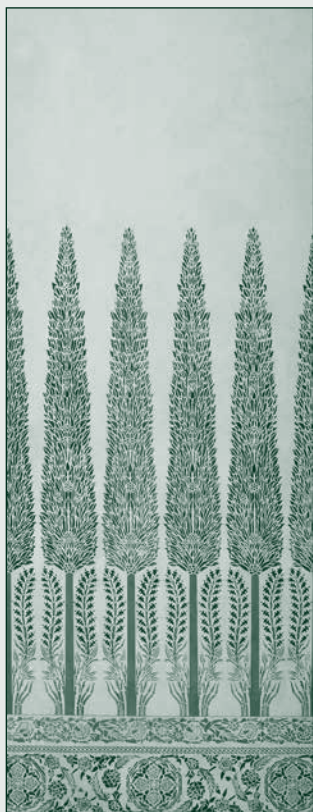
10. *Left to right:*

**Photographic print,
c. 1880–93**

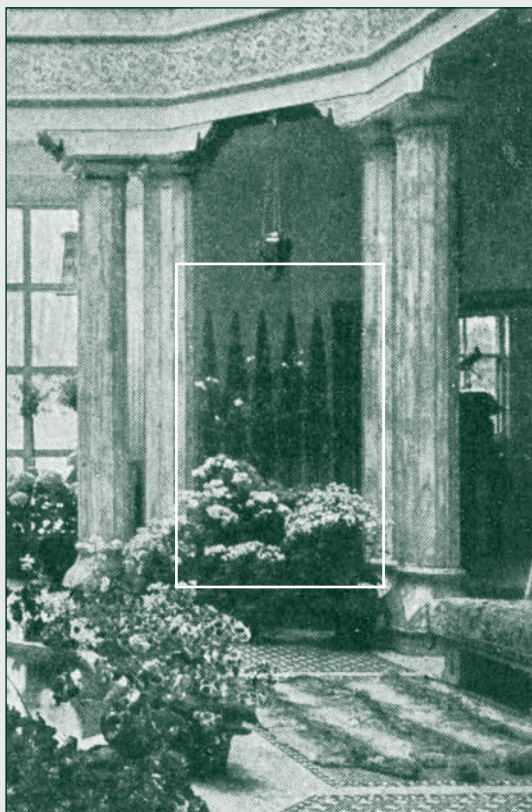
Tilework in corridor in the
Imperial Topkapı Sarayı
(palace), Istanbul, Turkey,
No. 756 from the album
*Yıldız and Topkapı palaces
tombs, and Selamlık
procession, Istanbul,
Ottoman Empire*

Duplicate photograph from
a mounted albumen print
Abdullah Frères,
Constantinople, Ottoman
Empire (modern
Turkey), 1858–1900

Marks: *Abdullah Frères 756. /
Vieux Sérail*
(2000-024:009)



Left: Stenciled fabric (#10 in gallery) derived from a Turkish source decorated the lower level of the reception hall (seen in the boxed area on the right).



Right: Reception hall, Laurelton Hall, c. 1908. Photograph by Henry H. Saylor, "Indoor Fountains," *Country Life in America*, August 1908.

Wall panel, c. 1903

Reception hall,

Laurelton Hall

Painted textile

(58-020)



THE CHARLES HOSMER
MORSE MUSEUM
of American Art

445 NORTH PARK AVENUE, WINTER PARK, FLORIDA 32789 | 407-645-5311 MORSEMUSEUM.ORG