

GALLERY XIV
ART NOUVEAU
FROM EUROPE AND AMERICA

O B J E C T G U I D E

- 1) **Lithograph, 1896–1900**
Alphonse Marie Mucha, Czech,
1860–1939
(PR-025-69, PR-011-68, or 2001-038)

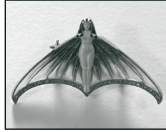
2) **Jewelry**

Top row, left to right:

Brooch, c. 1900

Winged figure
Gold, enamel,
diamond
Eugène Feuillâtre,
French, 1870–1916

Marks: [French hallmark] / *E. F.*
(MET-055-71)



Brooch, c. 1900

Gold
Jean Baptiste Émile Dropsy,
French, 1848–1923
Retailer: Maison Savard, Paris,
c. 1895–1920
Marks: *E. Dropsy*
(71-018)

Bottom row, left to right:

Pendant, c. 1900

Autumn design
Gold, enamel
René Lalique, French,
1860–1945
Marks: *LALIQUE* / [Latin
cross in lozenge] / [double
outlined eagle head] / [anvil]
(MET-003-71)



Notepad, c. 1905

Silver, enamel, glass
Possibly Friedrich Adler, German,
1878–1942
Marks: *900 DEPOSE / 900*
(MET-025-68)

3) **Dessert set, c. 1905**

Cornflower pattern
Glazed stoneware
James Macintyre & Co.,
Burslem, England, c. 1860–present
Designer: William Moorcroft,
English, 1872–1945
Retailer: Tiffany & Co.,
New York City, 1837–present
Marks, cup: *W. Moorcroft / 603 / ••*
Marks, saucer: *W. Moorcroft / 680 / ••*
Marks, plate: *W. Moorcroft /*
Tiffany + Company / 646 / ••
(PO-011-66: A–C)

4) **Plate**, c. 1900

Porcelain
Jean Pouyat, Limoges,
France, 1816–present
Decorator: A. Little,
probably American, active c. 1900
Marks: *J. P. / L. / FRANCE /
A. Little.*
(PO-008-68)



5) *Clockwise from back left:*

Vase, c. 1903

Floral design
Porcelain
The Rozenburg
Factory, The Hague,
Holland, 1883–1916
Designer: J. Luriaan
Kok, Dutch,
1861–1919
Decorator: Samuel Schellink,
Dutch, 1879–1958
Marks: [crown] / *Rozenburg /
[stork] / den Haag /
[window inspection mark] 1102 /
[star date stamp] / [maker's mark]*
(PO-002-71)



Cup and saucer, c. 1903

Glasgow Rose pattern
Porcelain
E. Brain & Co. Ltd., Foley Works,
Fenton, Staffordshire, England,
c. 1903–63
Designer: George Logan,
Scottish, 1866–1939
Marks, cup and saucer: *FOLEY ART
CHINA / PEACOCK* [peacock]
*POTTERY / ENGLAND. RD /
COPYRIGHT*
Marks, saucer only: 5
Gift of Harry C. Sigman
(2014-016:60)

Figurine, 1902

Glazed clay
Rookwood Pottery, Cincinnati,
1880–1967
Marks: [conjoined *RP* surmounted by
flames] / *II / 3137*
(PO-024-71)

6) **Vase**, c. 1901

Morrisian Eastern
Figures line
From “Beauty and the
Beast,” *Bradley: His
Book*, Vol. I, No. IV,
August 1896
Glazed earthenware
Royal Doulton,
Burslem, England,
1815–2009
Designer: William H. Bradley,
American, 1868–1962
Marks: *DOULTON / IVORY /
L8096 / [lion and crown] /
ROYAL DOULTON /
ENGLAND* [logo] /
MORRISIAN / [roses]
(PO-007-71)



7) **Coffee service**, c. 1905

Sterling silver
Shreve, Crump & Low, Boston,
1869–present
Inscribed: *OCT 12. / 1905 /
[conjoined *EM*]*
Marks: *SHREVE, CRUMP & LOW
CO. / 1994 / [Eagle] TRADEMARK /
STERLING*
(MET-002-90: A–C)

8) *Back row, left to right:*

Vase, c. 1915

Glass
Cristallerie d'Emile Gallé, Nancy,
France, 1874–1935
Marks: *Gallé*
Gift of Harry C. Sigman
(2014-016:23)

Vase, c. 1890

Dahlia
Glass, enamel
Cristallerie d'Emile
Gallé, Nancy, France,
1874–1935
Designer: Emile Gallé,
French, 1846–1904
Marks: *Cristallerie* /
[leaves] / *d'Emile Gallé* /
Modèle et Décor Déposés
(GL-003-69)



Front row, left to right:

Vase, c. 1890

Orchid
Glass, enamel
Cristallerie d'Emile Gallé, Nancy,
France, 1874–1935
Designer: Emile Gallé, French,
1846–1904
Marks: *Cristallerie* / [leaf] / *5 / E /*
Gallé / à *Nancy* / *Modèle et*
Décor Déposés
(GL-004-68)

Vase, c. 1910

Dragonfly and water
Glass
Cristallerie d'Emile Gallé, Nancy,
France, 1874–1935
Marks: [star] *Gallé*
Gift of Harry C. Sigman
(2014-016:21)

9) Ewer, c. 1890

Dragonfly
Glazed red clay
Emile Gallé, French,
1846–1904
Marks: *Emile*
[EG with cross of
Lorraine] *Gallé* / à *Nancy* /
Modèle Déposé
(PO-001-84)



10) Table lamp, c. 1896

Loïe Fuller figure
Bronze
Siot-Decauville, Paris,
1860–c. 1925
Designer: Raoul-
François Larche,
French, 1860–1912
Marks: *RAOUL LARCHE* / *U /*
SIOT.DECAUVILLE. / *FONDEUR /*
PARIS / I 996
(MET-002-69)



11) Vase, c. 1900

Forget-me-nots
Marqueterie de verre
Glass, gilt silver
Cristallerie d'Emile
Gallé, Nancy, France,
1874–1935
Silversmith: unknown,
French
Marks, glass: *Gallé*
Marks, mount: [Minerva in
lozenge] / *V*
(GL-004-73)



12) Clockwise from back left:

Magic of Fire Light candlestick, c. 1899

Model No. 2006, Fates series
Glazed porcelain
Riessner, Stellmacher & Kessel,
Turn-Teplitz, Bohemia, Austria,
1892–1905
Designer: Eduard Stellmacher,
Austrian, 1868–1932
Marks: *1077918 g / TURN-TEPLITZ-*
BOHEMIA / • *RS&K* • / [urn] / *MADE*
IN AUSTRIA / [head in profile]
AMPHORA • / *2006 / 41*
(PO-021-71: B)

Candlestick, c. 1902

Base No. 1200 C, one light, root design
Shade, Poppy-round
blown-glass top
Bronze, blown glass
Tiffany Studios, New York City, 1902–32
Marks: *TIFFANY STUDIOS* (79-550)



Candlestick, after 1902

No. 1203 A, one light, Leaf design, all metal tripod top
Bronze
Tiffany Studios, New York City, 1902–32
Marks: *TIFFANY STUDIOS / NEW YORK / 1203 / [conjoined TS]* (54-101)

13) Left to right:

Vase, c. 1895

Fish, seaweed, coral
Cameo glass
Daum Frères & Cie, Nancy, France, 1891–present
Decorator: Louis Antoine Damon, French, 1860–1947
Retailer: Au Vase Étrusque, Paris, 1887–1911
Marks: *Damon / Paris* (GL-026-84)



Vase, c. 1915

Glazed stoneware
Manifattura Chini, Mugello, Italy, 1902–43
Designer: Galileo Chini, Italian, 1873–1956
Marks: [maker's mark] / *MUGELLO / O / 2070* (PO-063-87)

Vase, c. 1903

Model No. 584, Osiris series, dandelion
Glazed earthenware
Riessner, Stellmacher & Kessel, Turn-Teplitz, Bohemia, Austria, 1892–1905
Marks: [illegible mark] / *AMPHORA / OSIRIS* • / 584 / 5 (PO-042-76)



14) Bowl, c. 1898

Glazed clay
Fayencerie de Nancy, Nancy, France, 1877–1931
Designer: Emile Gallé, French, 1846–1904
Marks: [inside the Cross of Lorraine *E. Gallé / Fayencerie / de / Nancy*] / 98 (PO-002-67)

15) Mantel mirror, 1902

Leaded glass, wood
Abel Landry, French, 1871–1923
Marks: *A. Landry / Barbe 1902* (FURN-033-70)



16) Table lamp, c. 1901–2

Phänomen gre. 829 design shade
Silver over bronze, blown glass, moonstones
Maker, glass: Glasfabrik Johann Loetz Witwe, Klostermühle, Bohemia, Austria, 1836–1939
Maker, base: K. & K. Hof-Silber- und Chinasilberwarenfabrik Moritz Hacker, Vienna, Austria, 1901–c. 1938
Marks: *MH20* [double-headed eagle crest] (MISC-027-69)

17) *Left to right:*

Vase, c. 1898

Blown glass
Tiffany Glass and Decorating
Company, New York City,
1892–1900
Marks: *L. C. T. / M1155*
(56-037)

Bowl, c. 1885

Thistle and Cross of Lorraine
Glass, enamel
Cristallerie d'Emile Gallé, Nancy,
France, 1874–1935
Designer: Emile Gallé, French,
1846–1904
Marks: *E. Gallé / déposé*
Gift of Harry C. Sigman
(2014-016:22)

Vase, c. 1905

Lily
Blown glass
Tiffany Studios, New York City,
1902–32
Marks: *L. C. T. Y6535*
Paper label: *TIFFANY FAVRILE*
GLASS REGISTERED TRADE
MARK / [conjoined TS]
(54-056)

18) **Vase, c. 1910**

Britannia metal, copper- and
gold-plated
Bitter & Gobbers
Metallwarenfabrik, Krefeld,
Germany, 1899–1910
Designer: Louis-Eugène Maurel,
French, 1880–1941
Marks: *E. Maurel*
(60-005)

19) *Left to right:*

Mantel clock, c. 1902

Brass, copper, wood,
glass
Alfred-Louis-Achille
Daguet, French,
1875–1942
Retailer: Siegfried
Bing's L'Art Nouveau, Paris,
1895–1904
Marks: • *CUIVRES S. BING • /*
ALF. DAGUET.
Marks, clockwork: *E.D / 1612 / S*
[arrow pointing up] *F / R A*
(MET-045-66)



Carriage clock, c. 1901

Tudric line
Pewter, enamel, copper
W. H. Haseler and Co.,
Birmingham, England,
1870–c. 1926
Designer: Archibald Knox,
Manx, 1864–1933
Retailer: Liberty & Co.,
London, 1875–present
Marks: *TUDRIC / 0721 / 1*
(70-004)

Shelf clock, c. 1900

Glazed earthenware
Wileman & Co., The Foley
Potteries, Fenton, Stoke-on-Trent,
England, 1860–1966
Designer: Frederick Alfred Rhead,
English, 1856–1933
Marks: *3116 / THE FOLEY /*
[crown] [conjoined WC] /
"INTARSIO" / ENGLAND / Rd. No.
337999
Inscribed: *PRITHEE / WHATS*
O'CLOCK
(PO-055-67)

Mantel clock, c. 1902–5

Great Clock, Tudric line
Pewter, abalone, brass
W. H. Haseler and Co.,
Birmingham, England, 1870–c. 1926
Designer: Archibald Knox, Manx,
1864–1933
Retailer: Liberty & Co., London,
1875–present
Marks: *TUDRIC 1 098*
Marks, movement: *FRANCE*
(70-005)

20) Die Nacht (the night) Masque, c. 1901

Mold No. 1271
Glazed earthenware
Riessner, Stelmacher & Kessel,
Turn-Teplitz, Bohemia,
Austria, 1892–1905
Designers: attributed to Eduard
Stellmacher, Austrian, 1868–1932,
and Elvir Otto, Austrian,
active c. 1900
(SC-071-70)

On the platform, clockwise:

**21) Revolving bookstand,
c. 1904**

Oak, fruitwood
Emile Gallé, French,
1846–1904
Marks: *E Gallé*
Gift of Harry C. Sigman
(2014-016:24)



22) Nesting tables, c. 1910

Design exhibited in Grand Prix
design, Exposition Universelle,
Brussels, 1910
Oak, fruitwood
Majorelle Frères et Cie, Nancy,
France, 1892–c. 1925
Designer: Louis Majorelle, French,
1859–1926
Marks: *L. Majorelle*
(FURN-025-70: A, B)

23) Side chair, c. 1890s

Wood, leather
Maker unknown, French
(FURN-077-88:1)

24) Occasional table, c. 1900

Oak, fruitwood
Emile Gallé, French, 1846–1904
Marks: *Gallé*
Gift of Harry C. Sigman
(2014-016:25)

On the platform, center:

25) Lamp, c. 1900

Indian Mallow
Corolla design
Blown and etched glass
Emile Gallé, French,
1846–1904
Marks: *Gallé*
(60-004)



THE CHARLES HOSMER
MORSE MUSEUM
of American Art

445 NORTH PARK AVENUE, WINTER PARK, FLORIDA 32789
407-645-5311 MORSEMUSEUM.ORG