

Gallery XIII

American Arts & Crafts Movement



PO-009-66

The nineteenth century was plagued by the problems of the modern industrial world. Despite the horrors of mass production, industry also created a larger and more prosperous middle class. This growing middle class was drawn to spaces that reflected the simplicity of another time. They wanted decorative objects and interior designs that embodied the very principles that their chaotic industrial society lacked.

1. Hall clock,
c. 1903

Charles Hosmer
Morse house,
Osceola Lodge,
Winter Park, Florida,
1886/1905–present
No. 30105, Russmore
Furniture line
Oak, leaded glass, metals
Tobey Furniture Company,
Chicago, 1856–1954
Marks inside case: *The Tobey
Furniture Co. Chicago /
J-A- / HAND MADE*
Marks, clock face: *TOBEY
CHICAGO 1856*
(FURN-074-93)



2. Mountain Landscape,
c. 1900

Oil on canvas
John George Brown, British,
1831–1913
Signed, lower left: *J. G.
Brown N.A.*
(P-045-80)

On top of stand:

3. Vase, 1905

Glazed earthenware
Grueby Faience Company,
Boston, 1894–1909
Marks: *GRUEBY FAIENCE
Co. / BOSTON. U.S.A. / 17A*
Paper label (round):
*GRUEBY . POTTERY /
.BOSTON .U.S.A. /
REGISTERED / [lotus
flower trademark] / TRADE
MARK;* paper label
(rectangular): *GRUEBY
POTTERY / BRI [ill.] / CON.
NO. 10397 (PO-073-66)*

Plant stand, c. 1903

Charles Hosmer Morse
house, Osceola Lodge,
Winter Park, Florida,
1886/1905–present
No. 325, Russmore
Furniture line
Oak
Tobey Furniture Company,
Chicago, 1856–1954
Paper label: *THE TOBEY
FURNITURE CO. /
CHICAGO / Number*
(FURN-014-75)



Charles Hosmer Morse and Osceola Lodge

The American Arts and Crafts movement has a long history in Winter Park. Charles Hosmer Morse (1833–1921)—an early investor in the town and the grandfather of the Museum’s founder, Jeannette Genius McKean (1909–89)—transformed his Winter Park home, Osceola Lodge, into a modern residence fitted with the latest and finest furnishings in the Arts and Crafts style. The Chicago industrialist began wintering in Winter Park in 1883. He purchased Osceola Lodge in 1904, and it became his permanent home in 1912.

Above: Charles Hosmer Morse (1833–1921) in his study at Osceola Lodge, c. 1915.

Right: Plant Stand, c. 1903. No. 325; Russmore Furniture line; Oak; Tobey Furniture Company, Chicago, 1856–1954 (FURN-014-075).



4. Harbor Scene, c. 1910

Oil on canvas

Jonas Lie, American,
1880–1940

Signed, lower left: *Jonas Lie*
(P-002-83)

5. Rocking chair,
c. 1913

Charles Hosmer
Morse house,

Osceola Lodge,
Winter Park, Florida,
1886/1905–present

No. 317, Arm rocker
Oak, leather

Gustav Stickley, Craftsman
Workshops, Eastwood
(Syracuse), New York,
1903–17

Marks: [joiners compass
around *Als / ik / kan*] /
Gustav Stickley
(FURN-158-89)



6. Smoker's stand, c. 1915

Trumpet shape

Bronze

Tiffany Studios,
New York City, 1902–32

Marks: *TIFFANY STUDIOS /*
NEW YORK / 1651
(69-031:A–C)

7. Mantel, c. 1910

Oak, glass, metal

Maker unknown, American
(FURN-055-85)

Top to bottom, left to right:

Vase, c. 1905

Glazed
earthenware
Grueby Faience

Company, Boston,
Massachusetts, 1894–1909
Marks: [illegible] /
[conjoined *JE*]

Gift of Herbert O. and
Susan C. Robinson
(PO-131-86)



Vase, c. 1906

Glazed earthenware
Grueby Faience
Company, Boston,
Massachusetts, 1894–1909
Modeler: Ruth T. Erikson,

Swedish-American,
1883–c. 1954
Marks: *GRUEBY POT[TERY*
Boston U.S.A.] /
[conjoined *RE*]
(PO-087-68)

Vase, c. 1905

Glazed earthenware
Grueby Faience
Company, Boston,
Massachusetts, 1894–1909
Marks: *GRUEBY POTTERY /*
BOSTON. U.S.A. /

[conjoined *JE*]

Gift of Herbert O. and
Susan C. Robinson
(PO-132-86)

**Pair of candlesticks,
c. 1901–3**

Bronze
Robert Riddle Jarvie,
American, 1865–1941
(1998-001:1, 2)

Fire tools, c. 1905

Charles Hosmer Morse
house, Osceola Lodge,
Winter Park, Florida,
1886/1905–present
Wrought iron
Maker unknown, American
(FURN-133-89:A–D)

*Arts and Crafts objects
were constructed with an
honest use of materials.*

Firescreen, c. 1905

Charles Hosmer Morse
house, Osceola Lodge,
Winter Park, Florida,
1886/1905–present
Metal
Maker unknown, American
(2013-001)

Rug, c. 1910

Wool
Maker unknown, Persian
(22018)

8. Top to bottom:

**Sunset on
the Hudson,
c. 1865–76**

Oil on artist's
board

Albert Bierstadt, American,
1830–1902

Signed, lower right:

ABierstadt

Gift of Theodore E. and
Susan Cragg Stebbins
(2020-004:2)



**The Old Homestead,
c. 1870–75**

Oil on panel

Ralph Albert Blakelock,
American, 1847–1919

Signed, lower left:

R. A. Blakelock

Gift of Theodore E. and
Susan Cragg Stebbins
(2019-009:1)

Chair, c. 1913

Charles

Hosmer Morse
house, Osceola



Lodge, Winter Park, Florida,
1886/1905–present

No. 306 1/2, chair,
hard leather seat

Oak, leather

Gustav Stickley, Craftsman
Workshops, Eastwood,
New York, 1903–17

Marks: [joiner's compass
around *Als / ik / kan*] /

Gustav Stickley

(FURN-082-88:2)

9. Book rack, c. 1905

Charles Hosmer Morse
house, Osceola Lodge,

Winter Park, Florida,

1886/1905–present

Oak

Unknown maker, American
(2001-002)

Top shelf, left to right:

Vase, c. 1900

Glazed

earthenware

Grueby Faience



Company, Boston,

Massachusetts, 1894–1909

Marks: *GRUEBY FAIENCE*
Co. / BOSTON. U.S.A. / 73

(PO-088-68)

Vase, c. 1906

Glazed earthenware

Grueby Faience

Company, Boston,

Massachusetts, 1894–1909

Marks: *GRU[EBY FAIE]NCE*
Co. / BOSTON. U.S.A.

(PO-016-75)

Vase, c. 1905

Glazed earthenware
Grueby Faience
Company, Boston,
Massachusetts, 1894–1909
Marks: *GRUEBY FAIENCE Co.* /
[lotus flower trademark] /
BOSTON. U.S.A. / 121 /
[illegible]
Gift of Herbert O. and
Susan C. Robinson
(PO-130-86)

Lower shelf, left to right:

Bookends, c. 1920

Copper
Craftsman Studios,
Los Angeles, California,
c. 1917–40
Marks: [conjoined CS]
(MET-053-79)

**Selected books from the
Morse archives, 1851–1911**

Tile, c. 1905

Glazed earthenware
Grueby Faience Company,
Boston, Massachusetts,
1894–1909
Gift of Herbert O. and
Susan C. Robinson
(PO-007-88)

10. Table, c. 1903

Likely Charles Hosmer
Morse house, Osceola Lodge,
Winter Park, Florida,
1886/1905–present
Oak
probably Tobey Furniture
Company, Chicago,
1856–1954
(FURN-086-88)

On top of table:

**Library lamp,
c. 1902**

Shade No. 1482,
Turtleback Band
design, dome shape
Shade: Leaded glass
Tiffany Studios, New York
City, 1902–32
Marks, shade: *TIFFANY
STUDIOS / NEW YORK*
Base: Glazed earthenware,
metal
Grueby Faience
Company, Boston,
Massachusetts, 1894–1909
Marks, base: *GRUEBY
POTTERY / BOSTON
U.S.A.* / 220
(V-006)

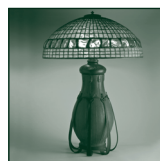


Table liner, c. 1915
 Monk's cloth, embroidery
 Unknown maker, American
 (2001-046)

11. Master Draper, c. 1910
 Oil on panel
 Ignaz Marcel Gaugengigl,
 German, 1855–1932
 Signed, upper right:
I.M. GAUGENGIGL
 Gift of Theodore E. and
 Susan Cragg Stebbins
 (2019-009:5)
12. China cupboard, c. 1905
 Oak, glass, copper
 Gustav Stickley, Craftsman
 Workshops, Eastwood
 (Syracuse), New York,
 1903–17
 (FURN-087-88)

*Integrity, simplicity,
 and dignity were intrinsic
 elements of an
 Arts & Crafts interior.*

Cupboard top shelf,
 left to right:

Vase, c. 1905
 Glazed
 earthenware
 Grueby Faience
 Company, Boston,
 Massachusetts, 1894–1909
 Marks: *GRUEBY FAIENCE Co.* /
 [lotus flower trademark] /
 [BOS]TON. U.S.A.
 (PO-008-71)



Bowl, c. 1906
 Glazed earthenware
 Grueby Faience
 Company, Boston,
 Massachusetts, 1894–1909
 Marks: *GRUEBY POTTERY* /
 [lotus flower trademark] /
 BOSTON. U.S.A.
 (PO-015-75)

Middle shelf, left to right:

Vase, c. 1900
 Glazed earthenware
 Grueby Faience
 Company, Boston,
 Massachusetts, 1894–1909
 Marks: *GRUEBY FAIENCE*
Co / BOSTON. U.S.A.
 (PO-011-72)

Grueby

Corresponding to the Arts and Crafts tendency to promote local aesthetics, Grueby looked beyond Old-World taste in ceramic art and captured the bold simplicity of New England. Art connoisseurs of the period admired its design symmetry and pleasing textures. Colors ranged from deep green to saffron yellow to turquoise blue, with glazes that avoided luster in favor of capturing a surface of deeply saturated brilliance. Even the “peculiar effects produced by accidents of firing” were valued by collectors as evidence of the unique creation of each work.



Above: Vase, c. 1905. Glazed earthenware; Grueby Faience Company, Boston, Massachusetts 1894–1909 (PO-078-68).



Above: Bowl, c. 1906. Glazed earthenware; Grueby Faience Company, Boston, Massachusetts 1894–1909 (PO-015-75).

Vase, c. 1906

Glazed earthenware
Grueby Faience
Company, Boston,
Massachusetts, 1894–1909
Marks: *GRUEBY FAIENCE*
Co. / BOSTON. U.S.A. / 156
Gift of Herbert O. and
Susan C. Robinson
(PO-128-86)

Bottom shelf, left to right:

Vase, c. 1906

Glazed
earthenware
Grueby Faience
Company, Boston,
Massachusetts, 1894–1909
Modeler: Wilhelmina Post,
American, 1867–1935
Marks: *GRUEBY POTTERY /*
[lotus flower trademark] /
BOSTON USA / [conjoined
WP] / 3/6/7
Gift of Theodore E. and
Susan Cragg Stebbins
(2020-003:7)



Vase, c. 1900

Glazed earthenware
Grueby Faience Company,
Boston, Massachusetts,
1894–1909
Marks: *GRUEBY POTTERY. /*
[lotus flower trademark] /
BOSTON. U.S.A.
(PO-008-81)

13. Vase, c. 1905

Glazed earthenware
Grueby Faience
Company, Boston,
Massachusetts, 1894–1909
Marks: *GRUEBY FAIENCE Co. /*
[lotus flower trademark] /
BOSTON. U.S.A.
(PO-078-68)

14. *Left to right:*

Vase, c. 1906

Partially glazed earthenware
Grueby Faience
Company, Boston,
Massachusetts, 1894–1909
Marks: *GRUEBY POTTERY /*
BOSTON. U.S.A. / —X—
(PO-014-86)

Vase, 1902

Glazed

earthenware

Grueby Faience

Company, Boston,

Massachusetts, 1894–1909

Marks: *GRU*[EBY POTTER]Y /

BOSTON USA / [conjoined

DS] / 1902 / 8

(PO-012-72)



Vase, c. 1906

Glazed earthenware

Grueby Faience

Company, Boston,

Massachusetts, 1894–1909

Marks: [GRUEBY POTTERY] /

[BOST]ON. U.S.[A.] / I

Paper label: *GRUEBY*.

POTTERY / .*BOSTON. U.S.A.* /

REGISTERED /

[lotus flower trademark] /

TRADE MARK.

(PO-072-66)

Vase, c. 1906

Glazed earthenware

Grueby Faience

Company, Boston,

Massachusetts, 1894–1909

Marks: *GRUEBY POTTERY* /

[lotus flower trademark] /

BOSTON USA

Paper label: *GRUEBY*

POTTERY / *BOSTON U.S.A.* /

REGISTERED /

[lotus flower trademark] /

TRADE MARK

Gift of Herbert O. and

Susan C. Robinson

(PO-009-88)

Vase, c. 1905

Glazed earthenware

Grueby Faience

Company, Boston,

Massachusetts, 1894–1909

Marks: *GRUEBY POTTERY* /

[lotus flower trademark] /

BOSTON. U.S.A. / 425

Gift of Herbert O. and

Susan C. Robinson

(PO-133-86)

*Arts and Crafts
objects featured simplified
ornamentation.*

15. Vase, c. 1905

Daisies

Glazed

earthenware

Grueby Faience

Company, Boston,

Massachusetts, 1894–1909

Modeler: Ruth T. Erickson,

Swedish-American,

1883–1954

Marks: *GRUEBY POTTERY* /

BOSTON U.S.A. /

[lotus flower trademark] /

[conjoined *RE*] / 8 / 11 / 05

(PO-009-66)



THE CHARLES HOSMER
MORSE MUSEUM
American Art

445 North Park Avenue, Winter Park, Florida 32789 | 407-645-5311 morsemuseum.org