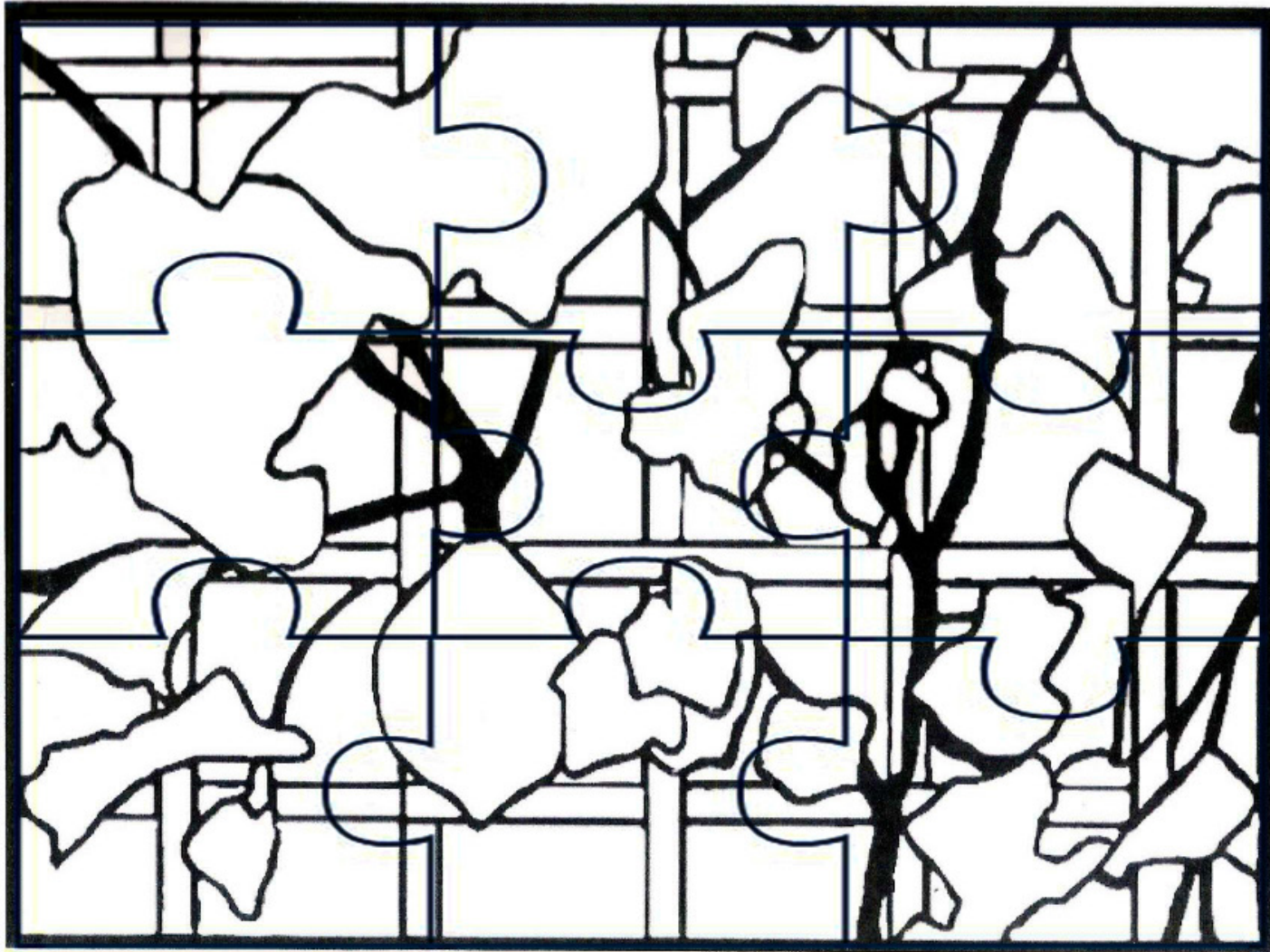




MORSE
MUSEUM

SEGMENTED SQUASH

Adaptation of: Transom, c. 1879. Squash, leaded glass, Louis C. Tiffany & Company, New York City, 1878–85 (71-006).



SEGMENTED SQUASH

Adaptation of: Transom, c. 1879. Squash, leaded glass, Louis C. Tiffany & Company, New York City, 1878–85 (71-006).

INSTRUCTIONS:

Download and print file. Gather materials.
Follow steps 1–4.

MATERIALS:

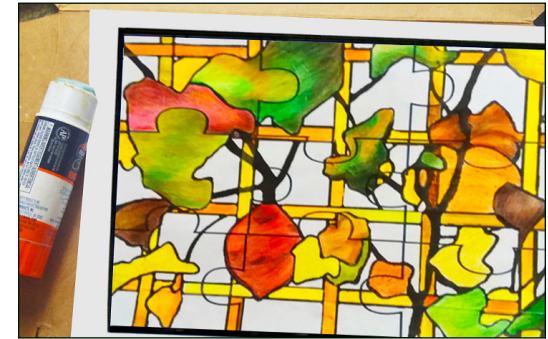
- 8 ½” x 11” white paper
- Printer
- Puzzle template
- Colored pencils and/or crayons
- Paperboard (see step 2)
- Glue stick
- Scissors

RESOURCES:

<http://www.morsemuseum.org/collection-highlights/windows/kemp-squash-window>



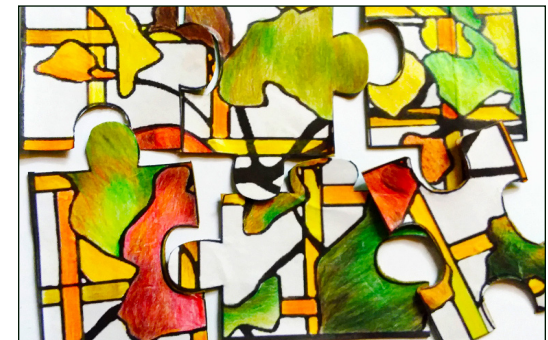
Step 1: Color puzzle template using colored pencils and/or crayons. Refer to the image of the original artwork (see Resources) for a color palette or create a different combination.



Step 2: Find a piece of paperboard to use as a backing. Paperboard is used to make boxes for cereals, cookies, crackers, and multi-packs of canned soda, so check the recycle bin! Flatten the paperboard so the surface is even and smooth. Glue puzzle template to paperboard using a glue stick.



Step 3: Cut along the thick black line that makes the rectangular border of the puzzle template.



Step 4: Cut along the lines of the puzzle pieces until there are nine individual pieces.