

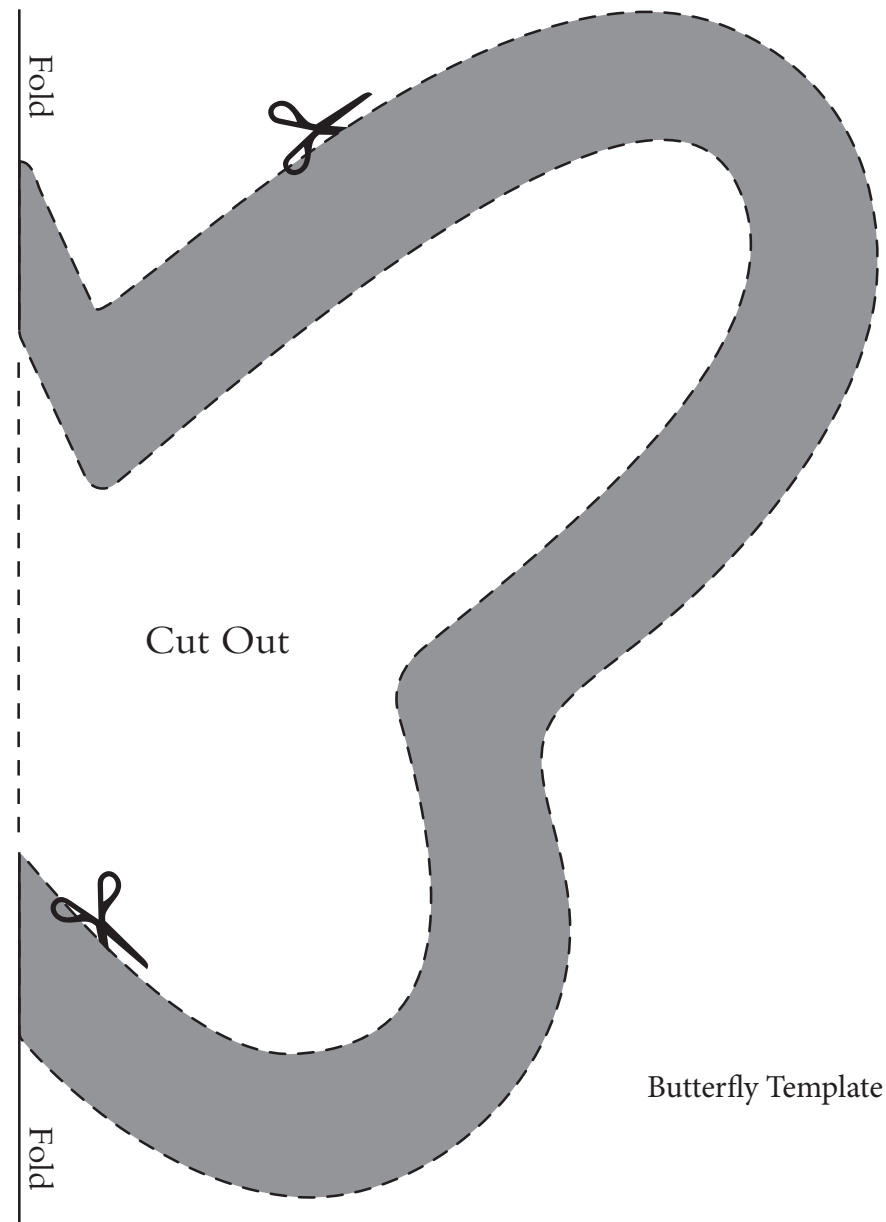
# BUTTERFLIES IN ART

## MATERIALS:

- Printer
- Butterfly template
- White copy paper
- Scissors
- Black construction paper (2 sheets)
- Wax paper
- Glue
- Old crayons
- Handheld pencil sharpener
- Old towel
- Iron (with adult supervision)
- Hole punch
- Ribbon

## RESOURCES:

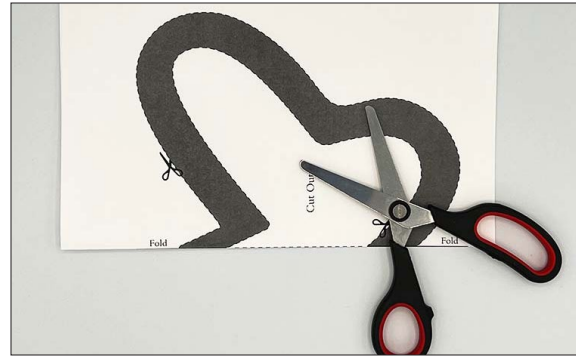
- <https://www.morsemuseum.org/collection-highlights/paintings/albert-bierstadt-butterfly-painting>
- <https://www.morsemuseum.org/collection-highlights/lamps-and-lighting/butterfly-design-lamp-screen>
- <https://www.morsemuseum.org/collection-highlights/windows/butterfly-window>



# BUTTERFLIES IN ART



**STEP 1:** Remove the labels from a variety of crayons. Use the pencil sharpener to create crayon shavings in separate piles of each color.



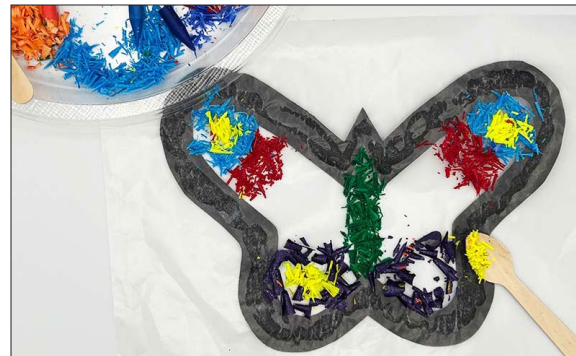
**STEP 2:** Print and cut out the butterfly template.



**STEP 3:** Fold both pieces of black construction paper in half and align the template along the folded edges. Trace and cut out both black sheets of construction paper to reveal two butterfly frames when unfolded.



**STEP 4:** Place a piece of wax paper over one frame so the entire frame is covered. Glue the two together. Repeat with the other black frame.



**STEP 5:** Place the crayon shavings on the wax paper inside one of the black butterfly frames. Pay careful attention to keep the patterns on both sides of the butterfly wing symmetrical.



**STEP 6:** Once crayon shavings are complete, glue edges of both frames together, so the 2 sheets of wax paper are sandwiched between the frames. Be very careful not to disturb shavings.

# BUTTERFLIES IN ART



**STEP 7: WITH AN ADULT**, empty water from an iron and heat to the highest setting. Place an old towel carefully on top of the artwork. Have an adult press the hot iron on the towel, moving quickly in a circular pattern for approximately 30 seconds.

**STEP 8:** Remove the towel to reveal a beautiful butterfly. Trim the excess wax paper from the edges, punch a hole in the center, and thread a ribbon through the hole. Hang in window to display.

