

Untitled landscape in original frame,

c. 1915

Decorator: Charles (Carl) Schmidt, 1875–1959

Signed, lower right: *C. Schmidt*

Marks on back: [conjoined *RP* surmounted by flames] / *XV / V / 370 - 2 ½" " 190 / 15 - / cut out rabbit to / cover edge* (PO-020-71)

Bottom row, left to right:

Untitled landscape, 1927

Decorator: Frederick Daniel Henry

Rothenbusch, active at Rookwood, 1896–1931

Signed, lower right:

[conjoined *FR*]

Marks: [conjoined *RP* surmounted by flames] / *XXVII · / 100- / 9 x 14 ½ / 170- ¾ as lining / +668 - 3" - outside - / 700 / 9 ¼ x 14 ½ R*

Gift of Randall M. and Annie R. Moore (PO-035-82)



Storm Clouds: Holland in original frame,

c. 1914

Decorator: Edward Timothy Hurley, 1869–1950

Signed, lower left: [conjoined *ETH*]

Marks: [*RP* conjoined surmounted by flames] / *XIV / V / ... / Storm Clouds: Holland / 1027 - 2 ½ - 200 x / 5 ⅞ x 7 ¾*

Paper label: [conjoined *RP* surmounted by flames]

Paper label: [illegible] (PO-005-65)

17) Left to right:

Vase, 1899

Glazed red clay with applied electroformed copper

Rookwood Pottery, Cincinnati, 1880–1967

Designer: Kataro Shirayamadani, 1865–1948

Marks: [conjoined *RP* surmounted by flames] / *764C* / [Japanese characters for Kataro Shirayamadani] Gift of Charles Sherman (PO-073-87)

Vase, 1898

Goldstone glaze line with some Tiger Eye glaze

Glazed red clay Rookwood Pottery, Cincinnati, 1880–1967

Designer: William Watts Taylor, 1847–1913

Decorator: Artus Van Briggie, 1869–1904

Marks: [conjoined *RP* surmounted by flames] / *745 B* / [conjoined *AVB*] (PO-015-94)

18) Vase, 1927

Glazed white clay Rookwood Pottery, Cincinnati, 1880–1967

Decorator: William E. Hentschel, 1892–1962

Marks: [conjoined *RP* surmounted by flames] /

XXVII / 1369 B /

[conjoined *WEH*]

(PO-018-68)



19) Left to right:

Vase, 1882

Glazed white clay Rookwood Pottery, Cincinnati, 1880–1967

Decorator: Maria Longworth Nichols, 1849–1932

Marks: *ROOKWOOD / 1882 / 102* / [*MLN*] (PO-017-68)



Vase, 1892

Glazed white clay with silver overlay Rookwood Pottery, Cincinnati, 1880–1967

Decorator: Sara Alice Toohey, 1872–1941

Marks: [conjoined *RP* surmounted by flames] / *640 / W* /

[conjoined *ST*] / *1892* / *GORHAM MFG. CO. / R 491* (PO-010-67)

20) Left to right:

Vase, c. 1916

Glazed white clay Rookwood Pottery, Cincinnati, 1880–1967

Designer: Kataro Shirayamadani, 1865–1948

Marks: [conjoined *RP* surmounted by flames] /

IV / II B Z V /

[Japanese characters for Kataro Shirayamadani]

(PO-055-68)



Vase, 1904

Glazed white clay Rookwood Pottery, Cincinnati, 1880–1967

Decorator: Edward Timothy Hurley, 1869–1950

Marks: [conjoined *RP* surmounted by flames] / *IV / 328 / D / Z* /

[inverted *V*] / [conjoined *ETH*] (PO-044-68)

21) Vase, 1903

Black Iris glaze line

Glazed white clay

Rookwood Pottery, Cincinnati, 1880–1967

Decorator: Charles (Carl) Schmidt, 1875–1959

Marks: [conjoined *RP* surmounted by flames] / *III / 904 / B / W* /

[conjoined *CS*]

(PO-005-92)



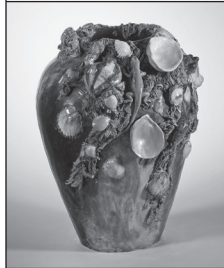
THE CHARLES HOSMER
MORSE MUSEUM
of American Art

445 NORTH PARK AVENUE, WINTER PARK, FLORIDA 32789
407-645-5311 WWW.MORSEMUSEUM.ORG

GALLERY XIV
AMERICAN
ART POTTERY

OBJECT GUIDE

TODAY THE NAMES Grueby, Rookwood, Robineau, and the Saturday Evening Girls, to mention just a few, are well-known among historians, collectors, and connoisseurs of ceramics.



This is because from the 1870s to World War I, American designers focused their talents on producing pottery that

rivalled any contemporaneous pottery in the world in beauty, quality, and variety. The work of America's art potteries became the first truly American original art to find widespread success both in the United States and on the international stage.

In the decades following the Civil War, interest in art pottery grew out of the popularity of decorating china with painted designs—a pastime dominated by women. Beginning roughly with the Philadelphia Centennial Exhibition of 1876, the demand for china—referred to by contemporary writers as “the ceramics craze” or “china mania”—expanded to include art pottery as an essential element

of interior decoration. The industry flourished until World War I but continued even into the 1950s. All the while, American women played a very prominent role.

At its height, American art pottery enjoyed production centers in virtually every region of the country although if it had a capital, one would have to say it was in the Ohio River Valley, where the clay was right and conditions were encouraging. In the Midwest, Maria Longworth Nichols, a onetime amateur china painter from a wealthy family, founded Rookwood Pottery in Cincinnati, but New England (Grueby), the Middle Atlantic (Fulper), and the South (Newcomb) all became sites of important potteries.

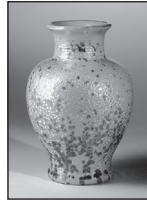
This gallery is devoted to the excellence, beauty, and variety of American art pottery.

Above: VASE, c. 1880–82. Glazed white clay, T.J. Wheatley & Company, Cincinnati, 1880–82 (PO-090-94).

1) **Vase, c. 1880–82**
Glazed white clay
T.J. Wheatley & Company, Cincinnati,
1880–82
(PO-090-94)

2) **Vase, c. 1915–early 1920s**
Glazed clay
Fulper Pottery Company, Flemington,
New Jersey, 1805–1935
Marks: [FULPER]
(PO-039-69)

3) **Vase, c. 1909–20**
No. 526
Glazed stoneware
Fulper Pottery Company,
Flemington, New Jersey,
1805–1935
Marks: [FULPER]
(PO-065-87)



4) *Clockwise from top:*
Vase, 1936
Glazed white clay
The Pisgah Forest Pottery, Arden,
North Carolina, 1926–present
Decorator: Walter Benjamin Stephen,
d. 1961
Marks: *Pisgah ForEst* / [potter-at-
kickwheel logo] / 1936 / *W B Stephen*
(PO-011-84)

Vase, c. 1900–3
Losanti ware
Glazed porcelain
Mary Louise McLaughlin, 1847–1939,
Cincinnati
Marks: [conjoined MCL] / CO / 70
(PO-021-84)

Vase, 1921
Glazed porcelain
Robineau Pottery, Syracuse, New York,
c. 1904–29
Adelaide Alsop Robineau, 1865–1929
Marks: [conjoined AR] / 17 / 1921
(PO-052-85)

5) **Pitcher, c. 1898–1900**
Glazed red clay
Biloxi Art Pottery, Biloxi,
Mississippi, c. 1882–1910
George E. Ohr,
1857–1918
Marks: *G E Ohr*
(PO-018-75)



6) **Vase, c. 1897–1907**
Glazed stoneware
Grueby Pottery, Boston, 1897–1913
Marks: [GRUEBY POTTERY] /
BOSTON. U.S.A. / I
Paper label: GRUEBY POTTERY /
BOSTON U.S.A. / REGISTERED /
TRADEMARK / [floral logo]
(PO-072-66)

7) **Vase, 1905**
Glazed stoneware
Grueby Pottery, Boston, 1897–1913
Decorator: Ruth Erickson, active at
Grueby, c. 1899–1910
Marks: GRUEBY POTTERY /
BOSTON U.S.A. / [floral logo] /
[conjoined RE] / 98 / 11 / 05
(PO-009-66)

8) **Vase, 1907**
Glazed white clay
Rookwood Pottery, Cincinnati,
1880–1967
Decorator: Charles (Carl) Schmidt,
1875–1959
Marks: [conjoined RP surmounted
by flames] / VII / 787 B / W /
[conjoined CS]
(PO-057-66)

9) **Vase, 1879**
Glazed yellow clay
Thomas J. Wheatley,
1853–1917
Marks: *T.J. Wheatley /*
Cincinnati / 1879 /
[logos]
(PO-005-70)



10) **Vase, c. 1902**
Glazed white clay
Newcomb College Pottery,
New Orleans, 1895–1940
Potter: Joseph Fortune Meyer, 1848–1941
Decorator: Marie Medora Ross,
active at Newcomb, 1896–1906
Marks: [conjoined NC] / [conjoined MR] /
U / [conjoined JM] / Q 9
(PO-093-81)

11) *Left to right:*

Vase, 1880
Glazed yellow clay
T.J. Wheatley & Company, Cincinnati,
1880–82
Marks: *T.J.W & Co / Pat Sep 28 / 1880*
(PO-001-72)

Vase, c. 1906
Glazed buff clay
Newcomb College Pottery,
New Orleans, 1895–1940
Potter: Joseph Fortune Meyer, 1848–1941
Decorator: Leona Fisher Nicholson,
1875–1966
Marks: [conjoined NC] /
[conjoined LN] /
[conjoined JM] / AV94 / Q
(PO-027-70)

Vase, c. 1906–8
Glazed tan clay
Saturday Evening Girls' Club of
Paul Revere Pottery, Boston, 1908–42
Marks: *SEG / LMD / 11-20*
(PO-088-88)

Vase, 1911
Glazed white clay
Rookwood Pottery,
Cincinnati, 1880–1967
Decorator: Sara Sax,
1870–1949
Marks: [conjoined RP
surmounted by flames] /
XI / 589 F / V /
[conjoined SAX] /
GV / 1
(PO-013-66)



12) **Vase, 1902–7**
Sicardo line
Metallic-glazed white clay
S.A. Weller Pottery, Zanesville, Ohio,
1872–1949
Decorator: Jacques Sicard, 1865–1923
Marks on base: 29
Marks on side: *WELLER / SICARD*
(PO-047-69)

13) **Vase, 1903–10**
Glazed white clay
Pewabic Pottery, Detroit, 1903–61,
1968–present
Marks: [PEWABIC DETROIT]
(PO-022-71)

14) **Vase, 1899**
Glazed white clay with
metal overlay
(copper electroplated
with gold wash)
Rookwood Pottery,
Cincinnati, 1880–1967
Decorator: Harriet
Elizabeth Wilcox,
1869–1943
Marks: [conjoined RP
surmounted by flames] /
879 B / H.E.W. /
Garden of [Eden]
(PO-006-92)



15) *Left to right:*

Vase, 1914
Glazed white clay
Rookwood Pottery, Cincinnati,
1880–1967
Decorator: Edward George Diers,
1870–1947
Marks: [conjoined RP surmounted
by flames] / ·XIV / V / 89 /
[conjoined ED]
(PO-036-76)

Vase, 1918
Glazed clay
Rookwood Pottery, Cincinnati,
1880–1967
Decorator: Frederick Daniel Henry
Rothenbusch, active at Rookwood
1896–1931
Marks: [conjoined RP surmounted
by flames] / XVIII / ·2060 /
[conjoined FR] / 1571
Gift of Herbert O. and Susan C.
Robinson
(PO-049-86)

Vase, 1913
Glazed white clay
Rookwood Pottery,
Cincinnati, 1880–1967
Decorator: Sara Sax,
1870–1949
Marks: [conjoined RP
surmounted by flames] /
XIII / 1065B / V / V /
[conjoined SAX]
Gift of Herbert O. and Susan C.
Robinson
(PO-033-82)



16) **Landscape plaques**
Glazed white clay
Rookwood Pottery, Cincinnati,
1880–1967

Top row, left to right:

A Florida River in original frame, c. 1915
Decorator: Lenore Asbury, 1866–1933
Signed, lower right: *L.A.*
Marks: [conjoined RP surmounted
by flames] / XV / V / *A Florida River /*
9 3/8 x 14 3/4 / 384 - 3" - 290 / 50 / X
Paper label: [conjoined RP
surmounted by flames]
Paper label: *A Florida River / L. Asbury*
(PO-002-79)

Misty Morn in original frame, c. 1913
Decorator: Edward George Diers,
1870–1947
Signed, lower right: *E. Diers*
Marks: [conjoined RP surmounted
by flames] / XIII / v / ··· / 40 - /
384 - 3 - 2.30 / 8 1/2 x 10 3/4
Paper label: [conjoined RP
surmounted by flames]
Paper label: "MISTY MORN" /
E. DIERS
(PO-019-71)

Middle row, left to right:

Sunny Tropics in original frame, c. 1913
Decorator: Lenore Asbury, 1866–1933
Signed, lower left: *L.A.*
Marks: [conjoined RP surmounted
by flames] / XIII / V / ··· / 60 - /
Sunny Tropics / 384 -3" 290 /
9 3/8 x 14 3/8
Paper label: [conjoined RP surmounted
by flames]
Paper label: *Sunny Tropics / L. Asbury*
(PO-001-79)

Birches in original frame,

c. 1927
Decorator: Edward
George Diers, 1870–1947
Marks: [conjoined RP
surmounted by flames] /
XXVII / · /
87- 1" as lining /
768- 1" - 350 / 4 x 8 /
4 x 8 / 25
Paper label: [conjoined
RP surmounted by flames]
Paper label: *Birches and*
The [illegible] / E. Diers
Gift of Herbert O. and Susan C.
Robinson
(PO-073-86)

