

GALLERIES I THROUGH III
SELECTED WORKS
OF LOUIS COMFORT TIFFANY

O B J E C T G U I D E

Objects and object groups without individual labels are numbered by case or at their location and identified here. Unless otherwise noted, all of the objects were designed by Tiffany or one of his artists and made under the name of one of his companies.

GALLERY I

1) *Top row, left to right:*

Vase, c. 1899

Blown glass

Marks: *L.C.T.* / *N 9857*
(54-013)

Vase, c. 1904

Blown glass

Marks: *8577 B* / *L.C. Tiffany – Favrite*

Paper label: *TIFFANY FAVRILE GLASS REGISTERED TRADE MARK* / [*LCT* conjoined monogram]
(54-021)



Vase, c. 1902–30

Blown glass
(62-019)

Bottom row, left to right:

Vase, c. 1898

Blown glass

Marks: *L.C.T.* / *K1109*
(U-030)

Flower holder, c. 1925

No. 158, gold husk base, opalescent tube top

Glass, bronze

Marks: *LOUIS C. TIFFANY FURNACES, INC.* / *158* / [*LCT* conjoined monogram]
(66-012)

2) *Left to right:*

Vase, c. 1905

Lava

Blown glass

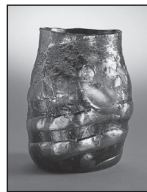
Marks: *2328 C* / *Louis C. Tiffany – Favrite*
(64-006)

Vase, c. 1914

Lava

Blown glass

Marks: *9771K* / *L.C. Tiffany – Favrite*
(65-029)



Vase, c. 1928

Blown glass

Marks: *3301P* / *Louis C. Tiffany – Favrite*

Paper label: *TIFFANY FAVRILE GLASS REGISTERED TRADE MARK* / [*LCT* conjoined monogram]
(70-022)

3) Vase, c. 1895
Cut and engraved glass
Paper label: *TIFFANY FAVRILE*
GLASS REGISTERED
TRADEMARK / [TGDco
conjoined monogram]
(84-008)

4) Left to right:

Bowl, c. 1919
Aquamarine
Blown glass
Marks: *1335N Louis C. Tiffany ·*
Favrile – Special Exhibit
(67-011)

Vase, c. 1914–15
Exhibited: Panama-Pacific
International Exposition,
San Francisco, 1915
Aquamarine
Blown glass
Marks: *5399M / L.C. Tiffany Inc. –*
Favrile / Panama-Pacific Exⁿ
(62-005)

5) Bowl, c. 1897
Cut blown glass
Marks: *o3440 / Louis C. Tiffany*
Paper label: *TIFFANY FAVRILE*
GLASS REGISTERED
TRADEMARK / [TGDco
conjoined monogram]
(64-031)

GALLERY II

1) Vase, c. 1897
Cypriote
Blown glass
Marks: *L.C.T. / E 118*
Paper label: *TIFFANY FAVRILE*
GLASS REGISTERED TRADE
MARK / [LCT conjoined
monogram]
(55-002)

Behind the leaded-glass panels:

2) Sculpture, 1858
Seated female fishing
Marble
Scipione Tadolini, 1822–92
Marks: *Scipio Tadolini / Fecit. Romae /*
AN / 1858
Gift of Henry Goodpasture
(SC-061-87)

3) Back row, left to right:

Inkstand, c. 1904–30
No. 1753, Chinese pattern, large
Bronze
Marks: *TIFFANY STUDIOS /*
NEW YORK / 1753
(77-007)

Inkstand, c. 1905–30
No. 1094, Bookmark pattern, small
Bronze
Marks: *TIFFANY STUDIOS /*
NEW YORK / 1094
(85-002)

Inkstand, c. 1905–25
No. 1699, Ninth Century pattern,
small
Bronze, glass
Marks: *TIFFANY STUDIOS /*
NEW YORK / 1699
Gift of Harold Krasner
(86-004)

Inkstand, c. 1914–30
No. 1777, Adam pattern
Bronze
Marks: *TIFFANY STUDIOS /*
NEW YORK / 1777
(84-012)

Inkstand, c. 1920–25
No. 1827, Louis XVI pattern
Bronze
Marks: *TIFFANY STUDIOS /*
NEW YORK / 1827
(85-003)

Inkstand, c. 1906–30
No. 1072, Zodiac pattern, large,
round
Bronze
Marks: *TIFFANY STUDIOS /*
NEW YORK / 1072
Gift of Mrs. Frank L. Babbott
(75-004)

Front row, left to right:

Inkstand, c. 1908–20
No. 1867, Venetian pattern, large
Bronze
Marks: *TIFFANY STUDIOS /*
NEW YORK / 1867
(82-006)

Inkstand, c. 1910–30
No. 1183, American Indian pattern
Bronze
Marks: *TIFFANY STUDIOS /*
NEW YORK / 1183
(91-004)

Inkstand, c. 1905–30
No. 1842, Nautical
pattern
Bronze
Marks: *TIFFANY*
STUDIOS /
NEW YORK / 1842
(77-008)



Inkstand, c. 1905–25
No. 864, Bookmark pattern, large
Bronze
Marks: *TIFFANY STUDIOS /*
NEW YORK / 864
Gift of Mr. and Mrs. J. B. Lea
(85-004)

Stamp box, c. 1910–30
No. 1184, American Indian pattern
Bronze
Marks: *TIFFANY STUDIOS /*
NEW YORK
(73-002:D)

4) Window, c. 1900–1910
Landscape with peacock and peonies
Leaded glass
(75-014)

GALLERY III

1) Medallion window,
c. 1892
Stairwell, Laurelton
Hall, Long Island,
New York
General exhibition
window in 13th-century design
Leaded glass
(U-073)



2) Vase, c. 1910
Maple Branch design
Bronze over unglazed and glazed
white clay
Marks: [LCT conjoined monogram] /
Favrile Bronze Pottery
Gift of the Rothbaum Family
(2009-033)

3) Vase, c. 1900
Blown glass, millefiori
Marks: *Louis C. Tiffany R4017*
(57-005)

4) Back row, left to right:

Candlestick, c. 1905
No. 1301 C, 20-in. single plain base,
Poppy-round blown-glass top
Bronze, glass
Marks: *TIFFANY STUDIOS /*
NEW YORK
(59-003)

Candlestick, c. 1900

No. 1312 D, single tripod base, long blown-glass top
Bronze, glass
Marks: *S1230*
(80-012)

Candlestick, after 1902

No. 1202 B, one light, Drill design base, jewel top
Bronze, glass
Marks: *TIFFANY STUDIOS / NEW YORK / 1202*
(54-102)

Front row, left to right:

Candlestick, after 1902

No. 1203 A, one light,
Leaf design base, all metal tripod top
Bronze
Marks: *TIFFANY STUDIOS / NEW YORK / 1203 / [TS conjoined monogram]*
(54-101)



Candlestick, c. 1905

No. 1213 A, one light, plain base, tall, all metal tripod top
Bronze
Marks: *TIFFANY STUDIOS / NEW YORK / 1213*
(U-022:2)

5) *Left to right:*

Floor lamp, after 1902

Shades No. 104, Drop Cluster Blossoms design
Standard No. 685, Pond Lily design, 12 lights
Blown glass, bronze
Marks on shades: *L.C.T.*
Marks on base: *TIFFANY STUDIOS / NEW YORK / 685*
(70-013)

Library lamp, after 1902

Shade No. 1482, Turtleback Band design, low dome shape
Leaded glass, bronze
(55-018)

Reading lamp, after 1902

Shade No. 1424, plain, Heavy Ribs design (“Spider and Web”)
Standard No. 337, Mushroom design, small
Leaded glass, bronze
Marks on shade: *TIFFANY STUDIOS / NEW YORK / 1424*
Marks on base: *337 TIFFANY STUDIOS*
(66-029)

Hanging shade, after 1900

No. 605, 28 in. Dogwood design, straight sides, circular shape
Leaded glass
Marks: *TIFFANY STUDIOS NEW YORK*
(68-008)

Library lamp, c. 1910

Shade No. 1447, Black-eyed Susan design, dome shape
Standard No. 357, Cushion base, Leaf design
Leaded glass, bronze
Marks on shade: *TIFFANY STUDIOS / NEW YORK*
Marks on base: *TIFFANY STUDIOS / NEW YORK*
(70-028)

6) *Left to right:*

Candlestick, c. 1901

Wild Carrot design base,
Merovignian [*sic*] design top
Bronze, blown glass
Marks on base: *TIFFANY STUDIOS / NEW YORK / D884*
Gift of Mrs. Frank McKean
(67-016)

Candlestick, c. 1900

No. 1200 C, one light, Root design base, Poppy-round blown-glass top
Bronze, glass
Marks: *TIFFANY STUDIOS*
(79-550)

Candlestick, c. 1901

No. 1308, 18 in. single Wild Carrot design base, Merovignian [*sic*] design top
Bronze, blown glass
Marks on base: *TIFFANY STUDIOS / NEW YORK / 1308*
(60-002)

7) **Window, after 1902**

First Presbyterian Church, Hoboken, New Jersey
Abstract floral
Leaded glass
(65-006)



8) *Back row, left to right:*

Flower holder, c. 1925

No. 152 E, enamel stand, opaque blue; blue tube top
Blown glass, enamel, copper
Marks on glass: *L.C.T. / Favrile*
Marks on base: *LOUIS C. TIFFANY FURNACES, INC. / [LCT conjoined monogram] / 1 5 2 E*
(U-005)

Flower holder, c. 1925

No. 152 A, enamel stand, gold to green to ruby; gold tube top
Blown glass, enamel, copper
Marks on glass: *L.C.T. / Favrile*
Marks on base: *LOUIS C. TIFFANY FURNACES, INC. / 152 A / [LCT conjoined monogram]*
(55-012)

Front row, left to right:

Flower holder, c. 1925

No. 150 G, enamel stand, gold with ruby and green sparkle; gold tube top
Blown glass, enamel, copper
Marks on glass: *L.C.T. / Favrile*
Marks on base: *LOUIS C. TIFFANY FURNACES, INC. / [LCT conjoined monogram] 150G*
(55-011)

Flower holder, c. 1925

No. 151, enamel stand, gold to green; gold tube top
Blown glass, enamel, copper
Marks on glass: *L.C.T. / Favrile*
Marks on base: *[LCT conjoined monogram] / LOUIS C. TIFFANY FURNACES, INC. / FAVRILE / 151*
(53-004)

9) **Window, c. 1895**

William Reis house, New Castle, Pennsylvania
Tri-panel, classical revival
Leaded glass
Marks: *TIFFANY GLASS & DECORATING COMPANY / NEW YORK*
(62-039)

10) *Late production, left to right:*

Vase, c. 1925

Blown glass
Marks: *4821 N / L. C. Tiffany – Favrile*
(79-529)

Card tray, c. 1925

Bronze, enamel
Marks: *[LOUIS] C. TIFFANY FURN [ACES, INC.] / FAVRILE / 413 / [LCT conjoined monogram]*
(81-013)

Liqueur glass, c. 1920

Pastel
Blown glass
Marks: *L. C. Tiffany – Favrile*
(54-024)



Fruit bowl, c. 1920

Blown glass, bronze, enamel
Marks: [LCT conjoined monogram]
LOUIS C. TIFFANY FURNACES INC. FAVRILE 508
(54-107)

Liqueur glass, c. 1929

Pastel
Blown glass
Marks: *L.C.T. Favrile / 539 V*
(U-084)

Vase, c. 1926

Blown glass
Marks: *L. C. Tiffany – Favrile / 1685 P*
(69-020)

Compot (compote), c. 1925

Bronze, enamel
Marks: *LOUIS C. TIFFANY FURNACES INC. / FAVRILE / 526* / [LCT conjoined monogram]
(62-028)

11) *Late production, left to right, back to front:*

Card tray, c. 1925

Bronze, enamel
Marks: *LOUIS C. TIFFANY FURNACES, INC. / FAVRILE / 419* / [LCT conjoined monogram]
(U-020)

Vase, c. 1923

Blown glass
Marks: *1972 N Louis C. Tiffany – Inc. Favrile*
Paper label: *TIFFANY FAVRILE GLASS REGISTERED TRADE MARK* / [LCT conjoined monogram]
(54-015)

Compot (compote), c. 1925

Pastel
Blown glass
Marks: *L. C. Tiffany – Favrile / 1700*
(54-106)



Compot (compote), c. 1925

Bronze, enamel
Marks: *LOUIS C. TIFFANY FURNACES, INC. / FAVRILE / 522*
(69-012)

Bon-bon dish, c. 1925

Pastel
Blown glass
Marks: *L.C.T. – Favrile / 192*
Paper label: *TIFFANY FAVRILE GLASS REGISTERED TRADE MARK* / [LCT conjoined monogram]
(54-087)



Pair of claret glasses, c. 1920

Pastel
Blown glass
Marks: *L. C. Tiffany – Favrile*
(66-063, 064)

Water goblet, c. 1920

Pastel
Blown glass
Marks: *L.C.T. Favrile*
(66-057)

12) Vase, c. 1897

Cypriote
Blown glass
Marks: *L.C.T. / E150*
(55-010)

13) Selections of Tiffany commercial glass, c. 1895–1925

14) Three chains, c. 1882

Studio, Tiffany home, Seventy-second Street, New York City; north terrace, Laurelton Hall, Long Island, New York
Cast metal
Unknown maker, India
Tiffany & de Forest Decorators, 1880–82, importer
(75-008:B, 75-009:A, 75-010)

15) Etching, c. 1910

Man in a tent
Louis Comfort Tiffany
Signed, lower right: *Louis C. Tiffany*
Gift of Dorothy Schmiderer Baker
(92-002)

16) Left to right:

Brackets, c. 1881

Art gallery, Laurelton Hall, Long Island, New York
Teak
Unknown maker, India
Tiffany & de Forest Decorators, 1880–82, importer
(2004-021:02, 03, 04, 06)

Door panel, c. 1881

Teak, bronze
Mistri Caste, Ahmedabad, India, 1880s, maker
Tiffany & de Forest Decorators, 1880–82, importer
Gift of Museum of Fine Arts, St. Petersburg
(66-065)

17) Bowl, c. 1905–15

Wood, glass
Marks: *J.B. / L.C. Tiffany*
Museum membership purchase, 2002
(2002-038)

18) Flower vase, c. 1920

No. 1862, round, Urn design
Bronze
Marks: *TIFFANY STUDIOS / NEW YORK / 1862*
(2004-011)

19) Fragments, c. 1905–25

Laurelton Hall, Long Island, New York
Plaster, glass
(57-021:C, O)

20) Transom, c. 1905

William Watts
Sherman house, Newport, Rhode Island
Parrots
Leaded glass
(68-005)



21) Pair of windows, c. 1900–1910

Grapevine
Leaded glass
(64-028, 029)

22) Left to right:

Vase, c. 1910–14

Lily pad
Bronze over unglazed and glazed white clay
Marks: *B.P. 515 / L.C. Tiffany – Favrile Bronze Pottery* / [LCT conjoined monogram]
(81-007)

Vase, c. 1910–14

Hydrocleys nymphoides (aquatic lily of South America) and snake
Bronze over unglazed and glazed white clay
Marks: *B.P 315 / L.C. Tiffany – Favrite Bronze Pottery / [LCT conjoined monogram] / 1468* (79-549)

Vase, c. 1910–14

Corn stalks
Bronze over unglazed and glazed white clay
Marks: *B.P. 279 / L.C. Tiffany – Favrite Bronze Pottery / [LCT conjoined monogram]* (77-026)

23) Clockwise from top left:

Vase, c. 1925

Samian red
Blown glass
Marks: *L.C. Tiffany – Inc. / Favrite / 3990 N* (64-004)

Vase, c. 1914–15

Samian red
Blown glass
Marks: *100K L.C. Tiffany – Favrite [Exhibition Piece]* (66-054)

Vase, 1906–14

Samian red, Tel-el-Amarna
Blown glass
Marks: *5973 E / L.C. Tiffany – Favrite* (54-014)

24) Window, c. 1890–1900

Joseph Briggs house, Wood-Ridge, New Jersey
Plum tree
Leaded glass
(62-035)

25) Left to right:

Vase, c. 1905

Floral motif
Rock crystal
Marks: *L.C. TIFFANY / 115* (59-001)

Candle holder, c. 1905

Rock crystal
Marks: *119 / L.C. TIFFANY* (70-015)

26) Window, c. 1892–1900

Tsuba (Japanese sword guard)
Leaded glass
(74-022)

27) Transom, c. 1879

Dining room, George Kemp house, New York City
Squash
Leaded glass
(71-006)

28) Selections of Tiffany art glass,

c. 1894–1915



29) Window, c. 1892–1900

Jeweled geometric
Leaded glass
(64-027)



THE CHARLES HOSMER
MORSE MUSEUM
of American Art

445 NORTH PARK AVENUE
WINTER PARK, FLORIDA 32789
407-645-5311
WWW.MORSEMUSEUM.ORG