

GALLERY XIV
ART NOUVEAU
 FROM EUROPE AND AMERICA

O B J E C T G U I D E

1) **Lithograph, 1896–1900**

Alphonse Marie Mucha, Czech,
 1860–1939
 (PR-025-69, PR-011-68, or 2001-038)

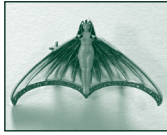
2) **Jewelry**

Top row, left to right:

Brooch, c. 1900

Winged figure
 Gold, enamel,
 diamond
 Eugène Feuillâtre,
 French, 1870–1916

Marks: [French hallmark] / *E. F*
 (MET-055-71)



Brooch, c. 1900

Gold
 Jean Baptiste Émile Dropsy,
 French, 1848–1923
 Retailer: Maison Savard, Paris,
 c. 1895–1920
 Marks: *E. Dropsy*
 (71-018)

Bottom row, left to right:

Pendant, c. 1900

Autumn design
 Gold, enamel
 René Lalique, French,
 1860–1945

Marks: *LALIQUE* /
 [Latin cross in lozenge] /
 [double outlined eagle head] / [anvil]
 (MET-003-71)



Notepad, c. 1905

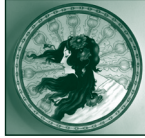
Silver, enamel, glass
 Possibly Friedrich Adler, German,
 1878–1942
 Marks: *900 DEPOSE* / *900*
 (MET-025-68)

3) **Dessert set, c. 1905**

Cornflower pattern
 Glazed stoneware
 James Macintyre & Co.,
 Burslem, England, c. 1860–present
 Designer: William Moorcroft,
 English, 1872–1945
 Retailer: Tiffany & Co.,
 New York City, 1837–present
 Marks, cup: *W. Moorcroft* / *603* / ••
 Marks, saucer: *W. Moorcroft* / *680* / ••
 Marks, plate: *W. Moorcroft* /
Tiffany + Company / *646* / ••
 (PO-011-66: A–C)

4) **Plate**, c. 1900

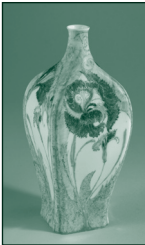
Porcelain
Jean Pouyat, Limoges,
France, 1816–present
Decorator: A. Little,
probably American, active c. 1900
Marks: *J. P. / L. / FRANCE / A. Little.*
(PO-008-68)



5) *Clockwise from back left:*

Vase, c. 1903

Floral design
Porcelain
The Rozenburg
Factory, The Hague,
Holland, 1883–1916
Designer: J. Luriaan
Kok, Dutch,
1861–1919
Decorator: Samuel Schellink,
Dutch, 1879–1958
Marks: [crown] / *Rozenburg / [stork] / den Haag / [window inspection mark] 1102 / [star date stamp] / [maker's mark]*
(PO-002-71)



Cup and saucer, c. 1903

Glasgow Rose pattern
Porcelain
E. Brain & Co. Ltd., Foley Works,
Fenton, Staffordshire, England,
c. 1903–63
Designer: George Logan,
Scottish, 1866–1939
Marks, cup and saucer: *FOLEY ART CHINA / PEACOCK*
[peacock] *POTTERY / ENGLAND. RD / COPYRIGHT*
Marks, saucer only: 5
Gift of Harry C. Sigman
(2014-016:60)

Figurine, 1902

Glazed clay
Rookwood Pottery, Cincinnati,
1880–1967
Marks: [conjoined *RP* surmounted
by flames] / *II / 3137*
(PO-024-71)

6) **Vase**, c. 1901

Morrisian Eastern
Figures line
From “Beauty and the
Beast,” *Bradley: His
Book*, Vol. I, No. IV,
August 1896
Glazed earthenware
Royal Doulton,
Burslem, England,
1815–2009
Designer: William H. Bradley,
American, 1868–1962
Marks: *DOULTON / IVORY / L8096 / [lion and crown] / ROYAL DOULTON / ENGLAND [logo] / MORRISIAN / [roses]*
(PO-007-71)



7) **Coffee service**, c. 1905

Sterling silver
Shreve Crump & Low, Boston,
1869–present
Inscribed: *OCT 12. / 1905 / [conjoined EM]*
Marks: *SHREVE, CRUMP & LOW CO. / 1994 / [Eagle] TRADEMARK / STERLING*
(MET-002-90:A-C)

8) *Back row, left to right:*

Vase, c. 1915

Glass
Cristallerie d’Emile Gallé, Nancy,
France, 1874–1935
Marks: *Gallé*
Gift of Harry C. Sigman
(2014-016:23)

Vase, c. 1890

Dahlia
Glass, enamel
Cristallerie d’Emile
Gallé, Nancy, France,
1874–1935
Designer: Emile Gallé,
French, 1846–1904
Marks: *Cristallerie / [leaves] / d’Emile Gallé / Modèle et Décor Déposés*
(GL-003-69)



Front row, left to right:

Vase, c. 1890

Orchid
Glass, enamel
Cristallerie d’Emile Gallé, Nancy,
France, 1874–1935
Designer: Emile Gallé, French,
1846–1904
Marks: *Cristallerie / [leaf] / 5 / E / Gallé / à Nancy / Modèle et Décor Déposés*
(GL-004-68)

Vase, c. 1910

Dragonfly and water
Glass
Cristallerie d’Emile Gallé, Nancy,
France, 1874–1935
Marks: [star] *Gallé*
Gift of Harry C. Sigman
(2014-016:21)

9) **Ewer**, c. 1890

Dragonfly
Glazed red clay
Emile Gallé, French,
1846–1904
Marks: *Emile [EG
with cross of
Lorraine] Gallé / à Nancy / Modèle Déposé*
(PO-001-84)



10) **Table lamp**, c. 1896

Loïe Fuller figure
Bronze
Siot-Decauville, Paris,
1860–c.1925
Designer: Raoul-
François Larche,
French, 1860–1912
Marks: *RAOUL LARCHE / U / SIOT-DECAUVILLE. / FONDEUR / PARIS / I 996*
(MET-002-69)



11) **Vase**, c. 1900

Forget-me-nots
Marquetry de Verre
Glass, gilt silver
Cristallerie d’Emile
Gallé, Nancy, France,
1874–1935
Silversmith: unknown,
French
Marks, glass: *Gallé*
Marks, mount: [Minerva in
lozenge] / *V*
(GL-004-73)



12) *Clockwise from back left:*

Magic of Fire Light candlestick, c. 1899

Model No. 2006, Fates series
Glazed porcelain
Riessner, Stellmacher & Kessel,
Turn-Teplitz, Bohemia, Austria,
1892–1905
Designer: Eduard Stellmacher,
Austrian, 1868–1932
Marks: *1077918 g / TURN-TEPLITZ-BOHEMIA / •RSiK• / [urn] / MADE IN AUSTRIA / [head in profile] AMPHORA • / 2006 / 41*
(PO-021-71:B)

Candlestick, c. 1902
Base No. 1200 C, one light, root design
Shade, Poppy-round blown-glass top
Bronze, blown glass
Tiffany Studios, New York City, 1902–32
Marks: *TIFFANY STUDIOS* (79–550)



Candlestick, after 1902
No. 1203 A, one light, Leaf design, all metal tripod top
Bronze
Tiffany Studios, New York City, 1902–32
Marks: *TIFFANY STUDIOS / NEWYORK / 1203 / [conjoined TS]* (54–101)

13) Left to right:

Vase, c. 1895
Fish, seaweed, coral
Cameo glass
Daum Frères & Cie, Nancy, France, 1891–present
Decorator: Louis Antoine Damon, French, 1860–1947
Retailer: Au Vase Étrusque, Paris, 1887–1911
Marks: *Damon / Paris* (GL-026–84)



Vase, c. 1915
Glazed stoneware
Manifattura Chini, Mugello, Italy, 1902–43
Designer: Galileo Chini, Italian, 1873–1956
Marks: [maker's mark] / *MUGELLO / O / 2070* (PO-063–87)

Vase, c. 1903
Model No. 584, Osiris series, dandelion
Glazed earthenware
Riessner, Stellmacher & Kessel, Turn-Teplitz, Bohemia, Austria, 1892–1905
Marks: [illegible mark] / *AMPHORA / OSIRIS / 584 / 5* (PO-042–76)



14) Bowl, c. 1898
Glazed clay
Fayencerie de Nancy, Nancy, France, 1877–1931
Designer: Emile Gallé, French, 1846–1904
Marks: [inside the Cross of Lorraine *E. Gallé / Fayencerie / de / Nancy / 98*] (PO-002–67)

15) Mantel mirror, 1902
Leaded glass, wood
Abel Landry, French, 1871–1923
Marks: *A. Landry / Barbe 1902* (FURN-033–70)



16) Table lamp, c. 1901–2
Phänomen gre. 829 design shade
Silver over bronze, blown glass, moonstones
Maker, glass: Glasfabrik Johann Loetz Witwe, Klostermühle, Bohemia, Austria, 1836–1939
Maker, base: K. & K. Hof-Silber- und Chinasilberwarenfabrik Moritz Hacker, Vienna, Austria, 1901–c. 1938
Marks: *MH20* [double-headed eagle crest] (MISC-027–69)

17) Left to right:

Vase, c. 1898
Blown glass
Tiffany Glass and Decorating Company, New York City, 1892–1900
Marks: *L. C. T. / M1155* (56–037)

Bowl, c. 1885
Thistle and Cross of Lorraine
Glass, enamel
Cristallerie d'Emile Gallé, Nancy, France, 1874–1935
Designer: Emile Gallé, French, 1846–1904
Marks: *E. Gallé / déposé*
Gift of Harry C. Sigman (2014–016:22)

Vase, c. 1905
Lily
Blown glass
Tiffany Studios, New York City, 1902–32
Marks: *L. C. T. Y6535*
Paper label: *TIFFANY FAVRILE GLASS REGISTERED TRADE MARK / [conjoined TS]* (54–056)

18) Vase, c. 1910
Brass
Krefelder Metallwaren-Fabrik Bitter & Gobbers, Krefeld, Germany, 1899–1910
Designer: Louis-Eugene Maurel, French, 1883–1960
Marks: *E. Maurel* (60–005)

19) Left to right:

Mantel clock, c. 1902
Brass, copper, wood, glass
Alfred-Louis-Achille Daguet, French, 1875–1942
Retailer: Siegfried Bing's L'Art Nouveau, Paris, 1895–1904
Marks: • *CUIVRES S. BING* • / *ALF DAGUET*
Marks, clockwork: *E.D / 1612 / S* [arrow pointing up] *F / R A* (MET-045–66)



Carriage clock, c. 1901
Tudric line
Pewter, enamel, copper
W. H. Haseler and Co., Birmingham, England, 1870–c. 1926
Designer: Archibald Knox, Manx, 1864–1933
Retailer: Liberty & Co., London, 1875–present
Marks: *TUDRIC / 0721 / 1* (70–004)

Shelf clock, c. 1900
Glazed earthenware
Wileman & Co., The Foley Potteries, Fenton, Stoke-on-Trent, England, 1860–1966
Designer: Frederick Alfred Rhead, English, 1856–1933
Marks: *3116 / THE FOLEY / [crown] [conjoined WC] / "INTARSIO" / ENGLAND / Rd.* No. 337999
Inscribed: *PRITHEE / WHATS O'CLOCK* (PO-055–67)

Mantel clock, c. 1902–5

Great Clock, Tudric line
Pewter, abalone, brass
W. H. Haseler and Co.,
Birmingham, England, 1870–c. 1926
Designer: Archibald Knox, Manx,
1864–1933
Retailer: Liberty & Co., London,
1875–present
Marks: *TUDRIC / 098*
Marks, movement: *FRANCE*
(70-005)

20) Die Nacht (the night) Masque, c. 1901

Mold No. 1271
Glazed earthenware
Riessner, Stellmacher & Kessel,
Turn-Teplitz, Bohemia,
Austria, 1892–1905
Designers: attributed to Eduard
Stellmacher, Austrian, 1868–1932,
and Elvir Otto, Austrian,
active c. 1900
(SC-071-70)

On the platform, clockwise:

**21) Revolving bookstand,
c. 1904**

Oak, fruitwood
Emile Gallé, French,
1846–1904
Marks: *E Gallé*
Gift of Harry C. Sigman
(2014-016:24)



22) Nesting tables, c. 1910

Design exhibited in Grand Prix
display, Exposition Universelle,
Brussels, 1910
Oak, fruitwood
Majorelle Frères et Cie, Nancy,
France, 1892–c. 1925
Designer: Louis Majorelle, French,
1859–1926
Marks: *L. Majorelle*
(FURN-025-70: A, B)

23) Side chair, c. 1890s

Wood, leather
Maker unknown, French
(FURN-077-88:1)

24) Occasional table, c. 1900

Oak, fruitwood
Emile Gallé, French, 1846–1904
Marks: *Gallé*
Gift of Harry C. Sigman
(2014-016:25)

On the platform, center:

25) Lamp, c. 1900

Indian Mallow
Corolla design
Blown and etched glass
Emile Gallé, French,
1846–1904
Marks: *Gallé*
(60-004)



THE CHARLES HOSMER
MORSE MUSEUM
of American Art

445 NORTH PARK AVENUE, WINTER PARK, FLORIDA 32789
407-645-5311 MORSEMUSEUM.ORG